



BARNETT
WADDINGHAM

Part of **HOWDEN**

Bedfordshire Pension Fund

Actuarial valuation as at 31 March 2025

Melanie Durrant FIA | Partner

Chris Morton FFA | Associate

Barnett Waddingham LLP

27 March 2026



Contents

- Contents2
- Executive Summary3
- Background4
- Valuation methodology4
- Results7
- Reconciliation to previous valuation 10
- Sensitivities to the liabilities 13
- Sensitivities to the primary rate 14
- Further comments 15
- Appendix 1 Summary of data and benefits..... 17
- Appendix 2 Summary of assumptions 20
- Appendix 3 Regulatory uncertainties 23
- Appendix 4 Gender Pensions Gap 24
- Appendix 5 Climate risk analysis 29
- Appendix 6 Decisions Log 31
- Appendix 7 Dashboard 32
- Appendix 8 Rates and Adjustments Certificate 35

Executive Summary

Some of the key results contained within this report are set out below:

1. Funding position

- Using the agreed assumptions, the Fund had a funding position of 102% as at 31 March 2025, which has increased from 92% at the 2022 valuation.

2. Contributions

- Individual employer contributions are set out in Appendix 8 in the Rates and Adjustments Certificate to cover the period from 1 April 2026 to 31 March 2029.

3. Methods and assumptions

- The assumptions are set out in Appendix 2 and we believe they are appropriate for the 31 March 2025 valuation. The key assumptions used are a discount rate assumption of 5.0% p.a. and a CPI inflation assumption of 2.7% p.a.
- Inflation experience has been significant since the 2022 valuation, with pension increases of 10.1% in 2023 and 6.7% in 2024, increasing the liabilities.

4. Investment performance

- Investment returns have been volatile since the previous valuation. Fund returns were higher than the discount rate set at 2022 which results in a higher funding level at 2025. An increase in future anticipated investment returns net of inflation (i.e. an increase in the real discount rate) has also improved the funding level.

5. Regulatory developments

- There have been a number of important regulatory developments since the 2022 valuation which have impacted the valuation including McCloud, Climate risk and the additional reporting requirements on Gender Pensions Gap.
- Details of how we have approached each development, as well as any relevant outcomes, is detailed in this report.

Comparison with other LGPS funds

The funding position and resulting contributions are based on assumptions about future factors such as investment returns, inflation and life expectancy. As these are uncertain, different assumptions and funding parameters are used by each LGPS fund to reflect their own views, circumstances and strategic objectives. These differences (amongst other factors including crucially the previous funding level and employer short and long-term affordability) will lead to differences in funding positions and contributions across LGPS funds.

To support comparison, LGPS funds are required to report a funding position on a consistent set of assumptions (called the "SAB funding level"). The Fund's SAB funding level at 31 March 2025 is 102%.

IMPORTANT NOTE: the SAB assumptions are to allow comparison only, they are not intended to be appropriate for funding purposes or setting contribution rates. As such, this result has no impact on the Fund's funding strategy or employer contribution rates.

Background

We have been asked by Bedford Borough Council, the administering authority for the Bedfordshire Pension Fund (the Fund), to carry out an actuarial valuation of the Fund as at 31 March 2025. The Fund is part of the Local Government Pension Scheme (LGPS), a defined benefit statutory scheme administered in accordance with the Local Government Pension Scheme Regulations 2013 (the Regulations) as amended.

The purpose of the valuation is to review the financial position of the Fund and to set appropriate contribution rates for each employer in the Fund for the period from 1 April 2026 to 31 March 2029 as required under Regulation 62 of the Regulations.

This report is provided further to earlier advice dated 20 October 2025 which sets out the background to the valuation and explained the underlying methods and assumptions derivation.

We would be pleased to discuss any aspect of this report in more detail.

Compliance statements

This advice is provided in our capacity as Fund Actuary.

This report summarises the results of the valuation and is addressed to the administering authority of the Fund. It is not intended to assist any user other than the administering authority in making decisions or for any other purpose and neither we nor Barnett Waddingham LLP accept liability to third parties in relation to this advice.

This advice complies with Technical Actuarial Standards (TASs) issued by the Financial Reporting Council – in particular TAS 100: General Actuarial Standards and TAS 300: Pensions.

Valuation methodology

Setting contributions

The contribution rates consist of two elements, the primary rate and the secondary rate:

- The **primary rate** for each employer is the employer's future service contribution rate (i.e. the rate required to meet the cost of future accrual of benefits) expressed as a percentage of pay.
- The **secondary rate** is an adjustment to the primary rate to arrive at the total rate each employer is required to pay (for example, to allow for deficit recovery) over a specified "recovery period". The secondary rate may be expressed as a percentage of pay or a monetary amount.

Regulation 62 specifies four requirements that the actuary "must have regard" to:

- 1 The existing and prospective liabilities arising from circumstances common to all those bodies
- 2 The desirability of maintaining as nearly a constant a primary rate as possible
- 3 The current version of the administering authority's Funding Strategy Statement (FSS)
- 4 The requirement to secure the "solvency" of the pension fund and the "long-term cost efficiency" of the Scheme, so far as relating to the pension fund

The wording of the second objective is not ideal in that it appears to be aimed towards the primary rate rather than taking into account the surplus or deficit of the employer. We believe that if we achieve reasonably stable total individual employer rates (which seems like a preferable objective) then we will also meet the regulatory aim.

The FSS guidance includes further details in the glossary, as follows:

- "**solvency**" means contributions should be set at "such a level as to ensure that the scheme's liabilities can be met as they arise". It is not

regarded that this means that the pension fund should be 100% funded at all times, and

- **“long-term cost efficiency”** means that contributions must not be set at a level that gives rise to additional costs. The contributions set will be deemed to ensure long-term cost efficiency if the rate of employer contributions is sufficient to make provision for the cost of current benefit accrual, with an appropriate adjustment to that rate for any surplus or deficit in the fund.

Secondary rate “recovery period”

The recovery period for individual employers varies across the Fund. The administering authority’s approach to setting recovery periods is set out in the FSS. Where there is a surplus, this may also be reflected in contribution rates in line with the Fund’s FSS.

The primary and secondary rate of the individual employer contributions payable are set out in the Rates and Adjustments Certificate in Appendix 8. These will differ from the whole Fund primary rate and differ from each other, as they are either based on the employer’s own membership and experience or they are the employer’s share of the contributions payable within a pool of employers.



Assumptions used

We have considered these four requirements when providing our advice and choosing the method and assumptions used.

A number of reports and discussions have taken place with the administering authority and, where required, its investment advisors before agreeing the assumptions to calculate the results and set contribution rates. In particular:

- The indicative assumptions report dated 24 February 2025 provides information on the background to the method and derivation of the assumptions.
- The initial results report dated 20 October 2025 provides information and results on a whole fund basis as well as background to the method and derivation of the agreed assumptions.
- The longevity assumptions advice paper dated 6 October 2025.
- The follow up assumptions note dated 21 October 2025 confirming the agreed actuarial assumptions following the meeting of 16 September 2025.
- The climate analysis report dated 21 October 2025 which considers climate risk in the context of the Fund’s 2025 actuarial valuation. It considers whether the 2025 valuation funding strategy is sufficiently robust in the context of this climate scenario analysis and any potential contribution impacts.
- The FSS which will confirm the approach in setting employer contributions.

Note that not all of these documents may be in the public domain and may be restricted to the administering authority which has no obligation to share them with any third parties.

The Fund's FSS has been reviewed in collaboration with the administering authority to ensure that it is consistent with this approach. The FSS complies with the updated FSS guidance published in January 2025 by the Scheme Advisory Board's Compliance and Reporting Committee, the Chartered Institute of Public Finance and Accountancy (CIPFA) and the Ministry of Housing, Communities and Local Government (MHCLG).

We confirm that in our opinion the agreed assumptions are appropriate for the purpose of the valuation. The assumptions in full are set out in Appendix 2.

Valuation of liabilities

To calculate the value of the liabilities, we estimate the future cashflows which will be made to and from the Fund throughout the future lifetime of existing active members, deferred benefit members, pensioners and their dependants.

We estimate the total value of these projected benefit cashflows as at 31 March 2025, using the membership data and accrued service to 31 March 2025 and the assumptions set out in Appendix 2, to be c.£10.5bn.

We then discount these projected cashflows using the discount rate assumption which is essentially a calculation of the amount of money which, if invested now, would be sufficient together with the income and growth in the accumulating assets to make these payments in future, using our assumption about investment returns, adjusted by the administering authority's chosen level of prudence (as measured by the chosen success probability).

This amount is called the present value (or, more simply, the value) of members' benefits. Separate calculations are made in respect of benefits arising in relation to membership before the valuation date (past service) and for membership after the valuation date (future service).

To produce the future cashflows or liabilities and their present value we need to formulate assumptions about the factors affecting the Fund's future finances such as inflation, salary increases, investment returns, rates of mortality and staff turnover etc.

The assumptions used in projecting the future cashflows in respect of both past service and future service are summarised in Appendix 2.

Valuation of assets

We have been provided with audited Fund accounts for each of the three years to 31 March 2025.

The market asset valuation as at 31 March 2025 was £3.65bn. Please note that this excludes members' additional voluntary contributions (AVCs).

For the purposes of the valuation, we use a smoothed value of the assets rather than the market value. The financial assumptions that we use in valuing the liabilities are smoothed around the valuation date so that the market conditions used are the average of the daily observations over the period 1 January 2025 to 30 June 2025. Therefore, we value the assets in a consistent way and apply the same smoothing adjustment to the market value of the assets.

The smoothed asset valuation as at 31 March 2025 was £3.72bn. This was based on a smoothing adjustment of 101.8%.

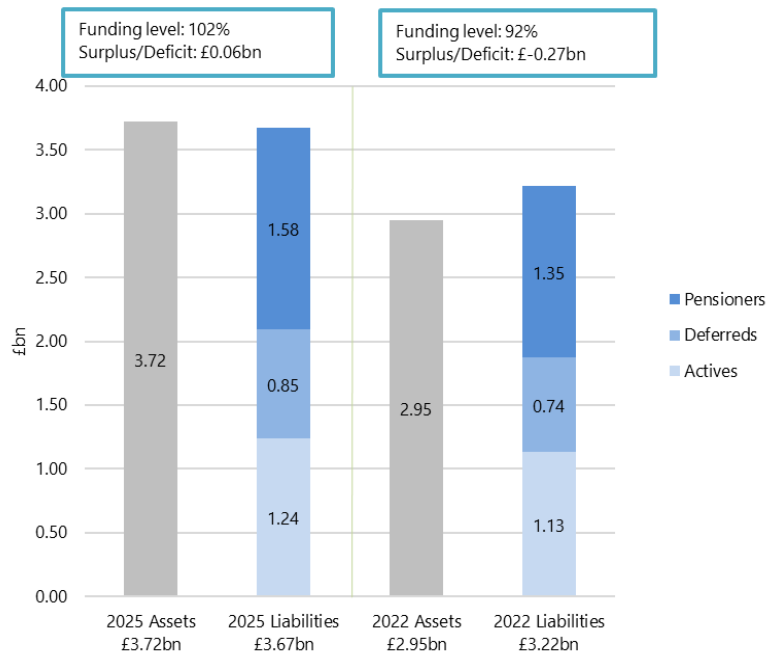
The Fund's long-term investment strategy has been taken into consideration in the derivation of the discount rate assumption. The investment strategy is set out in the Fund's Investment Strategy Statement (ISS) that is available on the Fund's website.

Results

Funding position

A comparison is made of the value of the existing assets with the value of the accrued liabilities. If there are more assets than liabilities, then there is a surplus. If the converse applies there is a deficit.

Using the assumptions summarised in Appendix 2, the funding position is set out in the graph below. This shows the funding position of the Fund at the current and previous valuation dates.



There was a surplus of £58.2m in the Fund at the valuation date, corresponding to a funding level of 102%.

Previous valuation results

The previous valuation was carried out as at 31 March 2022 by Barnett Waddingham. The results are summarised in the valuation report dated 31 March 2023 and reported a deficit of £273m.

Contribution rates

Primary rate

Using the assumptions summarised in Appendix 2, the resulting average primary rate across the whole Fund is set out in the table below (after allowing for member contributions). This includes a comparison to the primary rate at the previous valuation.

The primary rate for the whole Fund is the weighted average (by Pensionable Pay) of the individual employers' primary rates.

Primary rate	2025 valuation of payroll p.a.	2022 valuation of payroll p.a.
Average total future service rate	23.0%	26.1%
Less average member rate	6.4%	6.5%
Fund primary rate	16.7%	19.6%

Please note that figures are rounded.

Active members pay contributions to the Fund in line with the rates required under the Regulations.

Please note that expenses are allowed for in the derivation of the discount rate and therefore we make no explicit allowance in the primary rate for expenses.

In Appendix 8 we also disclose the sum of the secondary rates for the whole Fund for each of the three years beginning 1 April 2026.

Projected funding position

Based on the assumptions as set out in Appendix 2 and the contributions certified and set out in Appendix 8, we estimate that the funding position of the whole Fund will be 102% by 31 March 2028, the next valuation date. This projection is based on the assumptions made for this valuation and contributions being paid at the agreed amounts. This projection does not allow for any actual experience since 31 March 2025 nor any other risks or uncertainties. Some of these additional risks are set out later in this report and in Appendix 3.

Standardised basis

Following the funding valuation, a "Section 13" report (prepared under Section 13 of the Public Service Pensions Act 2013) will be prepared to report on whether the following aims are achieved: compliance, consistency, solvency and long-term cost efficiency, and to identify any funds that cause concerns.



As part of our calculations we have considered the results on a standardised basis as set by the Scheme Advisory Board (SAB). We are required to provide the SAB with the results for the Fund for comparison purposes.

The standardised basis is set using assumptions advice from the Government Actuary's Department (GAD) with some of the assumptions used being set locally (such as mortality) and some are set at Scheme level (including all the financial assumptions). It is not used to set contributions as it does not reflect the Fund's investment strategy or the administering authority's attitude to risk; contributions are set using the funding basis.

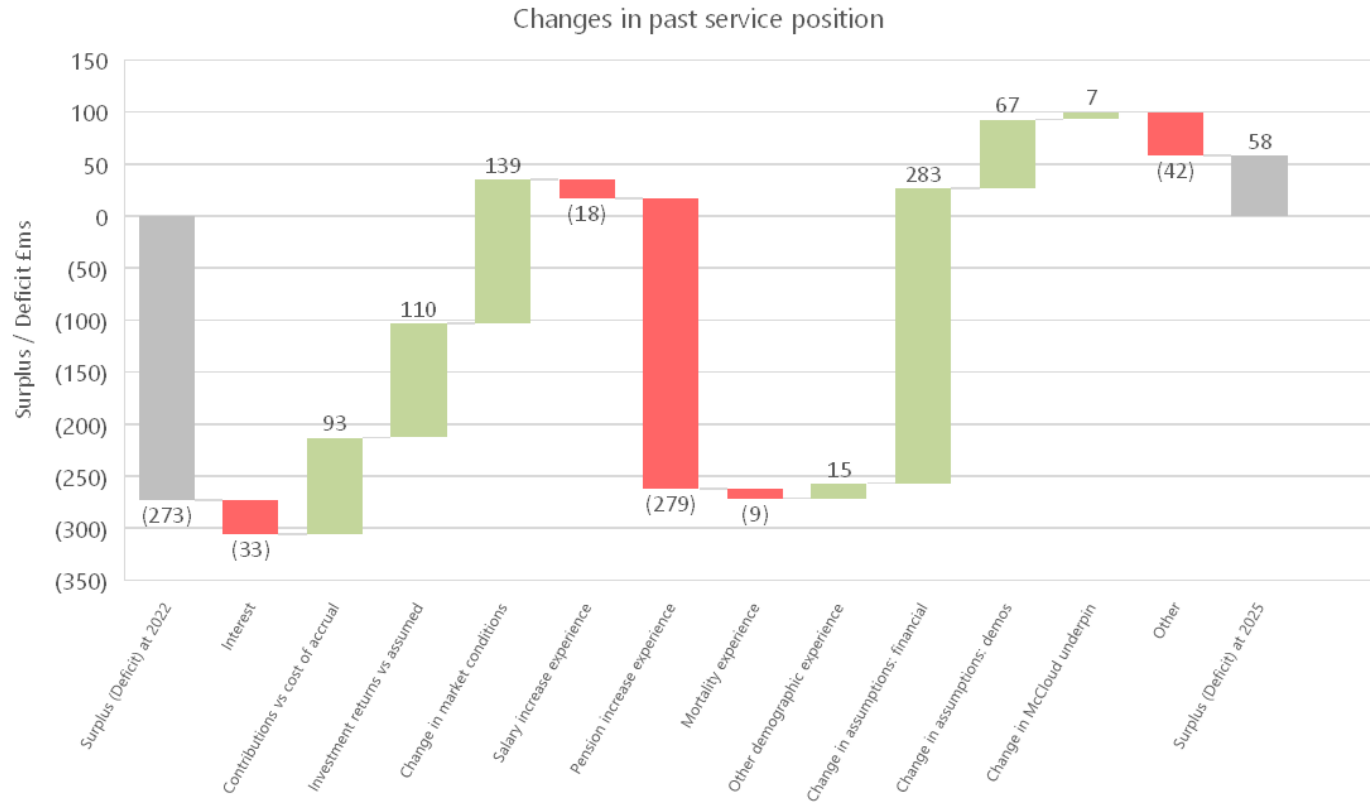
The results on the standardised basis as at 31 March 2025 are set out in the dashboard in Appendix 7. The dashboard should assist readers in comparing LGPS valuation reports and the information will be used by GAD in their "Section 13" report.

For the Bedfordshire Pension Fund, the funding level on the local funding basis and SAB basis is 102%. We want to note that, as requested by the Government Actuary's Department, the SAB funding level includes the 2026 pension increase award (i.e. includes an allowance for known CPI inflation to September 2025), whereas the local basis includes known CPI inflation to 31 March 2025 only. The funding position on the SAB basis would be around 1% lower if we did not make allowance for the additional CPI inflation.

Reconciliation to previous valuation

Funding position

The previous valuation revealed a deficit of £273m compared to the surplus of £58.2m at the 2025 valuation. The key factors that have influenced the funding level of the Fund over the period are illustrated in the chart below.

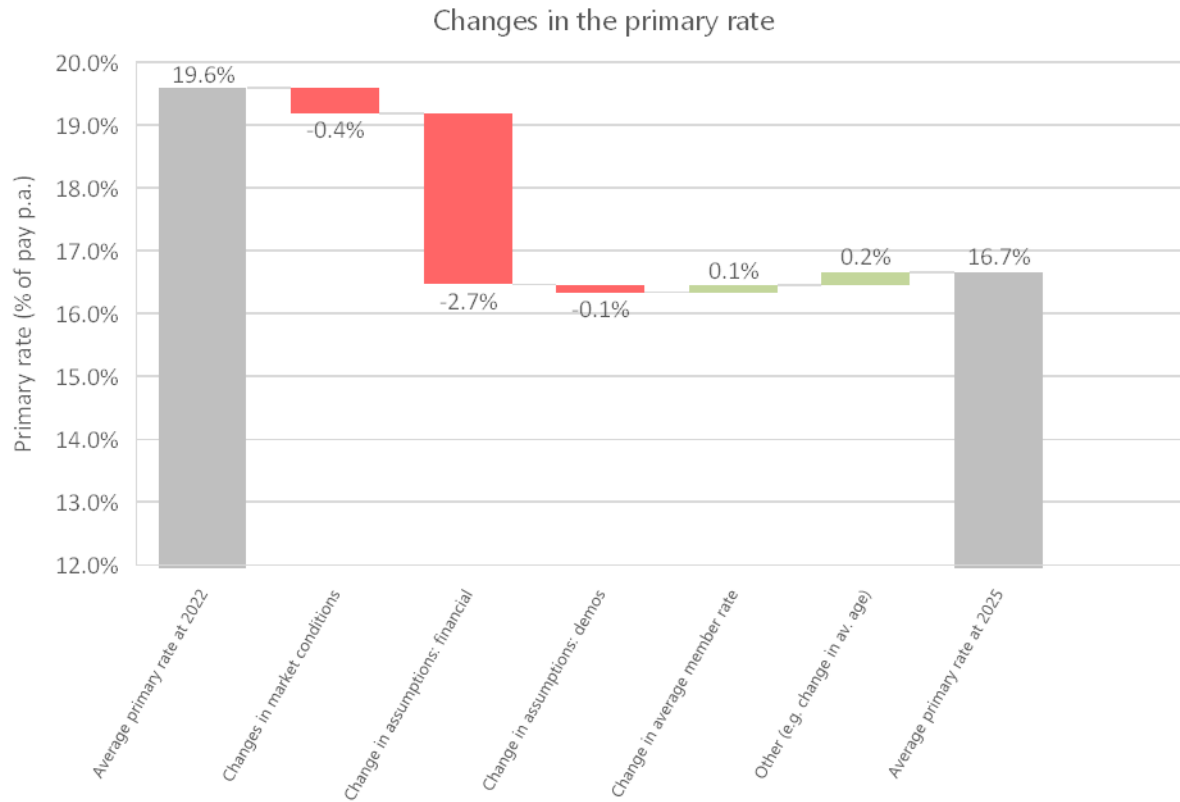


Comments on Fund results

- Changes in market conditions has decreased the Fund deficit by approximately £139m.
- Payment of secondary contributions has decreased the Fund deficit by approximately £93m
- Higher inflation than assumed has increased the deficit by approximately £279m
- Changes in financial assumptions used has decreased the deficit by approximately £283m

Primary contribution rate

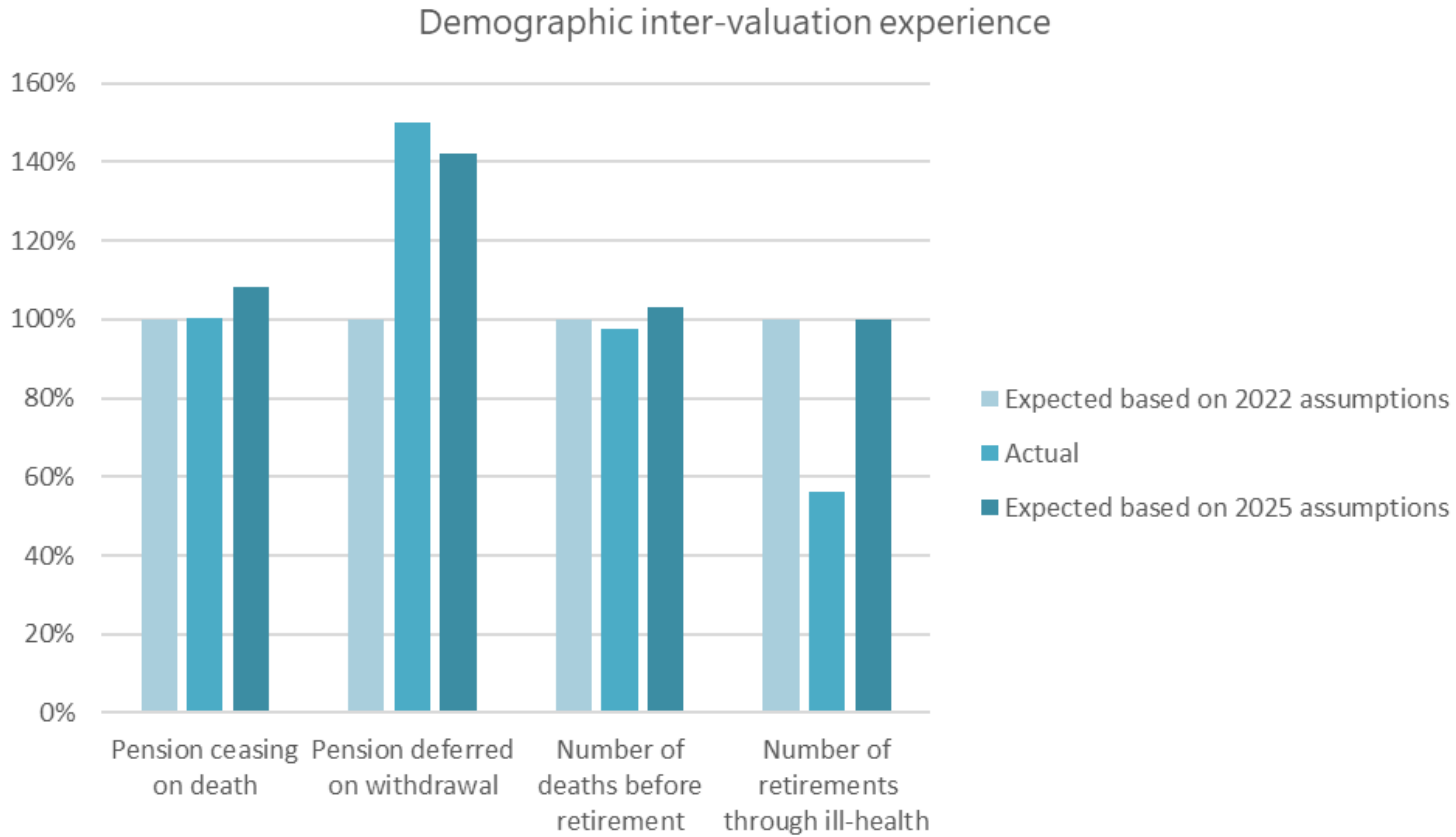
The previous valuation resulted in a whole Fund primary rate of 19.6% of pensionable pay compared to the whole Fund primary rate of 16.7% of pensionable pay at the 2025 valuation. The reasons for the change in the primary rate are set out in the reconciliation chart below.



Please note, 16.7% is the primary rate for the whole fund using the 2025 ongoing funding basis. The weighted average of the primary rates for all employers that participate in the Fund is 16.9%. This is due to a different discount rate assumption being used for tier 3 employers. Information on the discount rates used is provided in Appendix 2 and a full list of the primary rates by employer is provided in Appendix 8. More information on how contribution rates are calculated can be found in the Fund's Funding Strategy Statement.

Comparing experience with assumptions

A comparison of the actual demographic experience of members of the Fund over the intervaluation period, with that assumed by the assumptions adopted at the last valuation in 2022 is shown in the graph below. The graph also shows how the assumptions adopted for this valuation would have compared with those adopted at 2022.



Sensitivities to the liabilities

The results set out in this report are based on a particular set of assumptions. The actual cost of providing the benefits will depend on the actual experience, which could be significantly better or worse than assumed. The sensitivity of the results to some of the key assumptions is set out in the table below.

The figures in the table are shown relative to the surplus of £58.2m and funding level of 102% on the agreed funding basis as at 31 March 2025.

2025 sensitivity analysis of funding position	2025 Valuation basis	Decrease discount rate by 0.1% p.a.	Increase CPI inflation by 0.1% p.a.	Increase salary assumption by 0.5% p.a.	Reduce mortality rate by 10%
	£bn	£bn	£bn	£bn	£bn
Smoothed asset value	3.72	3.72	3.72	3.72	3.72
Total past service liabilities	3.66	3.72	3.72	3.68	3.74
Surplus / (Deficit)	0.06	0.00	0.00	0.04	-0.02
Funding level	102%	100%	100%	101%	100%

Sensitivities to the primary rate

The calculated primary rate required to fund benefits as they are earned from year to year will also be affected by the particular set of assumptions chosen. The sensitivity of the primary rate to changes in some key assumptions is shown below. Please note that the primary rate set out below does not include any adjustment via the secondary rate. The total contribution rate payable by employers will be a combination of the primary rate and a secondary rate adjustment, further details can be found in Appendix 8.

The figures in the table are shown relative to the whole Fund primary rate of 16.7% of Pensionable Pay on the agreed funding basis as at 31 March 2025.

2025 sensitivity analysis of primary rate	2025 Valuation basis of payroll p.a.	Decrease discount rate by 0.1% p.a. of payroll p.a.	Increase CPI inflation by 0.1% p.a. of payroll p.a.	Reduce mortality rate by 10% of payroll p.a.
Average total future service rate	23.0%	23.6%	23.6%	23.4%
Less average member rate	6.4%	6.4%	6.4%	6.4%
Fund primary rate	16.7%	17.2%	17.3%	17.0%

Further comments

Funding Strategy Statement (FSS)

The assumptions used for the valuation have been documented in a revised Funding Strategy Statement agreed between the Fund Actuary and the administering authority.

Risks

There are many factors that affect the Fund's funding position and could lead to the Fund's funding objectives not being met within the timescales expected. Some of the key risks that could have a material impact on the Fund are:

- Employer covenant risk
- Investment risk
- Inflation risk
- Mortality risk
- Member options risk
- Regulatory risk
- Climate risk

The sensitivity of the funding results to some of these risks was set out in the sensitivities section of this report. Please note that this is not an exhaustive list. Further information on these risks and more can be found in our initial results report and will be set out in greater detail in the FSS.

Post valuation events

Our funding model is designed to help withstand short-term volatility in markets as it is a longer-term model. We use smoothed assumptions over a six-month period with the ultimate aim of setting stable contributions for employers. The valuation approach and assumptions are not based on gilt yields and the discount rate is derived from the long-term future expected returns on each asset class with a deduction for uncertainty and risk (our prudence adjustment).

We have considered whether there are any developments since 31 March 2025 that are significant enough to review our approach. At this stage, we do not feel that the anticipated effect on the long-term funding position of any market movements is significant enough to revise our approach.

Nevertheless, due to the ongoing uncertainty around the shorter-term impact of these issues, we have considered these issues with the administering authority in setting the employer contribution rates to ensure that contributions into the Fund remain appropriate.

We will continue to monitor the Fund's funding position and raise any individual employer cases with the Fund that we consider need any special attention. The impact of these events will be fully considered as part of the 2028 valuation when we revisit employer contributions.

The next formal valuation is due to be carried out as at 31 March 2028 however we would recommend that the financial position of the Fund is monitored regularly during the period leading up to the next formal valuation.

Rates and Adjustments Certificate

The primary and secondary contributions payable by each employer have been set out in Appendix 8 in the Rates and Adjustments Certificate in accordance with Regulation 62 of the Regulations and cover the period from 1 April 2026 to 31 March 2029. In this certificate no allowance will be made for additional costs arising which need to be met by additional contributions by the employer such as non-ill health early retirements.

The contributions in the Rates and Adjustments Certificate are set so that each employer's assets (including future contributions) are projected to be sufficient to cover the benefit payments for their members, on the assumptions set out in this report. Where there is currently a deficit for an individual employer, recovery of this deficit is targeted in line with the Fund's FSS and all employers are projected to be fully funded after a recovery period length of no more than 11 years from 1 April 2026.



This document has been agreed between the administering authority and the Fund Actuary. Contributions have been set which in our opinion meet the regulatory requirements and the funding objectives set out in the Fund's FSS.

This report must be made available to members on request.

A handwritten signature in black ink that reads "Melanie Durrant".

Melanie Durrant FIA
Partner
Barnett Waddingham LLP

A handwritten signature in black ink that reads "Chris Morton".

Chris Morton FFA
Associate
Barnett Waddingham LLP

Appendix 1 Summary of data and benefits

Membership data

The membership data has been provided to us by the administrators of the Fund. We have relied on information supplied by the administrator and the administering authority being accurate. The membership data has been checked for reasonableness, and we have compared the membership data with information in the Fund's accounts. The numbers in the tables below relate to the number of records and so will include members in receipt of, or potentially in receipt of, more than one benefit.

Any missing or inconsistent data has been queried with the Fund and estimated where necessary.

Namely, we continued with the same approach used at the 2022 valuation to estimate McCloud benefits for eligible members. The Fund have been carrying out a data collection exercise with employers to obtain the additional data required to accurately calculate McCloud benefits, but this information had not been verified and was not used for the 2025 valuation. We do not expect the impact to be material to the results.

Changes to the data were summarised in the 2025 valuation member data processing and estimating report dated 6 October 2025 which was provided to the Fund. Whilst this should not be seen as a full audit of the data, we are happy that the data is sufficiently accurate for the purposes of the valuation.

Benefits

Full details of the benefits being valued are set out in the Regulations as amended and summarised on the [LGPS website \(https://www.lgpsmember.org/\)](https://www.lgpsmember.org/). We have made no allowance for discretionary benefits.

Membership summary

A summary of the membership data used in the valuation is as follows. The membership data from the previous valuation is also shown for comparison.

Please note that the average ages shown for 2025 are weighted by salary for active members and by pension for deferred and pensioner/dependant members. The comparative average ages shown for 2022 are weighted by liability. The change in approach to show average ages weighted by salary/pension was made so to remove the dependency on the basis used for the liability calculation. Liability weighted average ages available on request.

Data used	Data at 31 March 2025			Data at 31 March 2022		
Active members	Number	Pensionable pay £m	Average age (salary-weighted)	Number	Pensionable pay £m	Average age (liability-weighted)
Males	4,702	152	47	4,345	123	53
Females	19,414	420	46	18,323	328	52
Total	24,116	572	47	22,668	451	52
Deferred members (including undecided)	Number	Pension £m	Average age (pension-weighted)	Number	Pension £m	Average age (liability-weighted)
Males	7,977	17	50	7,451	14	52
Females	28,631	44	51	25,846	32	52
Total	36,608	61	51	33,297	46	52
Pensioner and dependant members	Number	Pension £m	Average age (pension-weighted)	Number	Pension £m	Average age (liability-weighted)
Males	6,659	51	73	6,157	43	70
Females	16,192	65	72	14,004	49	69
Total	22,851	117	73	20,161	92	69

Projected retirements

In the table below we have set out the number of members who are assumed to reach retirement age over the period from 1 April 2025 to 31 March 2029 as required under the Regulations.

Members may retire for a number of reasons including reaching normal retirement age, retiring through ill-health or redundancy. The amounts set out in the table below are the new retirement benefit amounts, as at the current valuation date that are assumed to come into payment in each of the intervaluation years.

Projected new benefits		
Year to	Number of members	Retirement benefits £m's
31 March 2026	1,492	13
31 March 2027	1,573	14
31 March 2028	1,806	14
31 March 2029	1,605	13

Guaranteed Minimum Pension (GMP) equalisation and indexation

As with the previous valuation, we have assumed that the Fund will pay limited increases for members that have reached State Pension Age (SPA) by 6 April 2016, with the Government providing the remainder of the inflationary increase. For members that reach SPA after this date, we have assumed that the Fund will be required to pay the entire inflationary increase. We are comfortable that our approach is consistent with the consultation outcome.

Appendix 2 Summary of assumptions

A summary of the assumptions adopted for the valuation at 31 March 2025 and as at 31 March 2022 is set out below.

Assumptions	2025 valuation	2022 valuation
Financial assumptions (p.a.)		
CPI inflation	2.7%	2.9%
Salary increases	3.7%	3.9%
Discount rate	5.0%	4.6%
Pension increases on GMP	Funds will pay limited increases for members reaching SPA by 6 April 2016, and full increases for others	
Demographic assumptions		
Post-retirement mortality		
Pensioners	110%/105% of S4P(M/F)A tables for males/females	2022 Club Vita tables
Dependants	100%/95% of S4PD(M/F)A tables for males/females	2022 Club Vita tables
Actives and deferreds (pre-retirement mortality)	115%/120% of GAD for males/females	105% of GAD
Actives and deferreds (post-retirement mortality)	As for current pensioner assumptions	As for current pensioner assumptions
Future improvements		
CMI model	CMI_2024	CMI_2021
Long-term rate of improvement (p.a.)	1.50%	1.25%
Initial addition parameter (p.a.)	0.0%	0.0%
Overlay half-life (not applicable in 2022)	1 year	n/a
Retirement assumption	Weighted average	Weighted average
Pre-retirement decrements	GAD 2020 scheme val: no salary scale, 50% multiplier to ill-health rates	GAD 2016 scheme val: no salary scale, 50% multiplier to ill-health rates
50:50 assumption	Member data	Member data
Commutation	50% of max	50% of max
Family statistics		
% with qualifying dependant	75% (M) / 65% (F)	75% (M) / 70% (F)
Age difference	Males 3 years older	Males 3 years older

Demographic assumptions – sample rates

The following tables set out some sample rates of the demographic assumptions used in the calculations. These sample rates are based on those set by the Government Actuary's Department (GAD) based on analysis of the Local Government Pension Scheme (LGPS) in England and Wales.

Allowance for ill-health early retirements

A small proportion of members are assumed to retire early due to ill health. In the table below we set out an extract of some sample rates from the GAD tables used:

Age	Males	Females
25	0.01%	0.00%
30	0.01%	0.01%
35	0.02%	0.01%
40	0.04%	0.03%
45	0.09%	0.06%
50	0.18%	0.13%
55	0.36%	0.28%
60	0.74%	0.62%
65	1.51%	1.34%

Please note the above rates are the raw decrements as set by GAD. Our assumption is that there will be 50% of the number of ill-health retirements assumed by GAD.

The proportion of ill-health early retirements falling into each tier category has been assumed to be as follows for both males and females:

Tier 1	Tier 2	Tier 3
75%	15%	10%

Death before retirement

A small number of members are assumed to die before reaching retirement age. In the table below we set out an extract of some sample rates from the GAD tables used:

Age	Males	Females
25	0.02%	0.01%
30	0.03%	0.01%
35	0.05%	0.02%
40	0.06%	0.03%
45	0.09%	0.05%
50	0.13%	0.08%
55	0.21%	0.12%
60	0.32%	0.19%
65	0.5%	0.29%

Please note the above rates are the raw decrements as set by GAD. We have applied a multiplier of 115% for males and 120% for females.

Allowance for withdrawals

This assumption is regarding active members who leave service to move to deferred member status. Active members are assumed to leave service at the following sample rates:

Age	Males	Females
25	14%	13%
30	10%	10%
35	8%	8%
40	6%	7%
45	5%	6%
50	4%	5%
55	3%	4%
60	3%	3%
65	2%	2%

Appendix 3 Regulatory uncertainties

There are currently a few important regulatory uncertainties surrounding the 2025 valuation as follows:

- Long-term impact of the McCloud and Sargeant cases;
- Cost management reviews which could affect future and historic LGPS benefits;
- Virgin Media case;
- Gender Pensions Gap reporting; and
- Climate change risks and opportunities;

Although it is unclear what impact these uncertainties will have on the future benefits of individual members, we have considered these issues in the assumptions used to set the contribution rates for employers.

McCloud

At the 2022 valuation we estimated the impact of the McCloud ruling for each active member based on the membership data available. This included looking back at historic valuation data to estimate a payroll history for each member which was then used to determine the equivalent service accrued in the final salary scheme had it not been discontinued. Due to the lack of sufficient data as well as direction from the Ministry of Housing, Communities and Local Government (MHCLG), no estimates were made for deferred and pensioner members.

The Fund have been carrying out a data collection exercise with employers to obtain the additional data required to accurately calculate McCloud benefits, but this information had not been verified and was not used for the 2025 valuation. Therefore we continued to use historic data for active members only.

Eligible member's liabilities include an allowance for the McCloud underpin as determined by the remedy regulations and reflects the fact that eligible members may receive a pension uplift at retirement if their benefits would have been higher had they continued to accrue service in the discontinued final salary scheme until 31 March 2022.

There still remains uncertainty over the long-term effects of the McCloud judgment but where data has been available, we have been able to estimate the impact of McCloud on individual employers and funding positions and contributions have been set accordingly.

Cost management reviews

Further cost control and cost management reviews will be carried out and may lead to future benefit changes. However, as the aim of this monitoring is to keep the cost of benefits within an affordable range, we can be relatively comfortable that future reviews will not have a significant impact on the value we placed on the liabilities and so did not make any explicit allowance for these.

Virgin Media case

This issue relates to a case where missing actuarial certification resulted in historic benefit changes being void. The Department for Work and Pensions (DWP) published an announcement on 5 June 2025 noting the plan to introduce new legislation in response to the Virgin Media vs NTL Trustees ruling. The legislation will allow affected pension schemes to retrospectively obtain written actuarial confirmation that historic changes to scheme rules met the required standards.

The new legislation is hoped to provide clarity to affected schemes, we have therefore assumed that there will be no impact on the LGPS as a result of the ruling.

Appendix 4 Gender Pensions Gap

On 15 May 2025, Government launched a consultation on changes to the Local Government Pension Scheme (LGPS) in England and Wales. The proposed changes are intended to improve fairness in and access to the LGPS. The proposals include addressing survivor pensions and deaths grants and addressing the Gender Pension Gap in the LGPS.

As required under the LGPS Regulations 2013, we have reported on the gender pensions gap within the fund. The reporting approach, including derivation of statistics, is consistent with the guidance '2025 Fund Valuations: Guidance for Gender Pension Gap reporting' dated 2 February 2026.

For the purpose of this analysis, we have relied upon the membership data provided by the Fund for the purpose of the 2025 actuarial valuation.

The Gender Pensions Gap (GPG) is calculated as:

$$GPG = \frac{\text{Mean pension value for males} - \text{Mean pension value for females}}{\text{Mean pension value for males}}$$

The GPG is expressed as a percentage. For example, a GPG of 10% indicates that, on average within the population analysed, for every £1 of pension accrued by males, females will have accrued £0.90.

Active members

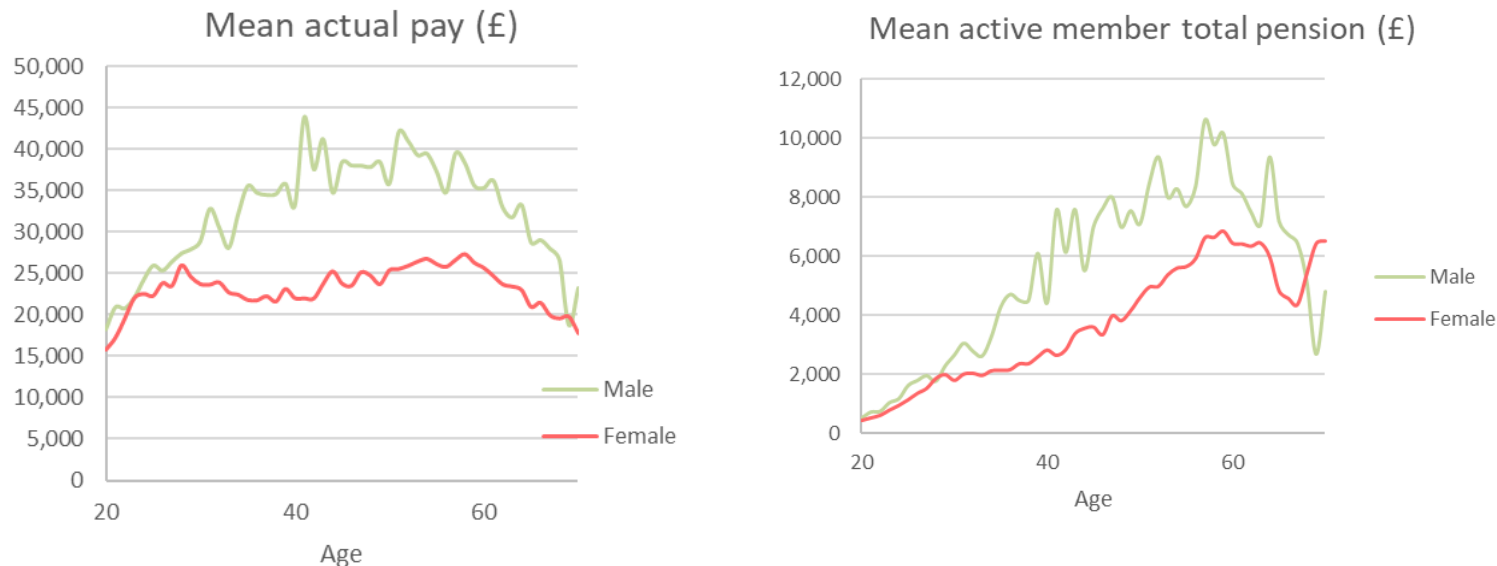
The results in this section set out the analysis for members who were active at 31 March 2025. Please note that the number of active members in the table below will differ from the total number of active records as set out in Appendix 1, as in the Gender pension gap (GPG) analysis we have treated members with multiple records as a single member.

Fund level analysis

At overall fund level, the gender pensions gap (GPG) for active members of the Fund is 36%. Further detail is set out in the table below.

Gender pension gap for active members	Number of members	Percentage of overall membership	Mean age	Mean FTE pay (£)	Mean actual pay (£)	Mean CARE pension (£)	Mean Final Salary pension (£)	Mean combined pension (£)
Females	17,751	80%	46	£34,794	£23,677	£2,986	£3,411	£3,824
Males	4,564	20%	46	£42,943	£33,225	£4,415	£6,201	£5,951
			Gender gap	19%	29%	32%	45%	36%

A chart of mean pensionable pay for males and females by age and chart of mean total pension by age is shown below.



Employer category analysis

In line with the Guidance, analysis at employer category level is set out below.

Local authorities and connected bodies (SF3 number 1)

All local authority maintained schools have been aggregated with their corresponding local authority for the purposes of this analysis.

GPG for local authorities and connected bodies	Number of members	Percentage of overall membership	Mean age	Mean FTE pay (£)	Mean actual pay (£)	Mean CARE pension (£)	Mean Final Salary pension (£)	Mean combined pension (£)
Females	11,132	77%	46	£36,660	£26,126	£3,359	£3,928	£4,360
Males	3,269	23%	47	£44,213	£36,276	£4,846	£6,671	£6,565
			Gender gap	17%	28%	31%	41%	34%

Centrally funded public sector bodies excluding academies (SF3 number 2, local authority indicator 1)

GPG for centrally funded public sector bodies (exc. academies)	Number of members	Percentage of overall membership	Mean age	Mean FTE pay (£)	Mean actual pay (£)	Mean CARE pension (£)	Mean Final Salary pension (£)	Mean combined pension (£)
Females	1,100	72%	45	£36,267	£24,929	£3,798	£4,236	£5,080
Males	438	28%	42	£41,703	£30,351	£4,627	£5,841	£6,454
			Gender Gap	13%	18%	18%	27%	21%

Academies (SF3 number 2, local authority indicator 2)

GPG for academies	Number of members	Percentage of overall membership	Mean age	Mean FTE pay (£)	Mean actual pay (£)	Mean CARE pension (£)	Mean Final Salary pension (£)	Mean combined pension (£)
Females	5,192	87%	45	£29,320	£18,050	£1,942	£1,768	£2,296
Males	756	13%	41	£35,382	£21,630	£2,191	£3,216	£2,620
			Gender Gap	17%	17%	11%	45%	12%

Private/voluntary/other bodies (SF3 number 4)

GPG for other private/voluntary/other bodies	Number of members	Percentage of overall membership	Mean age	Mean FTE pay (£)	Mean actual pay (£)	Mean CARE pension (£)	Mean Final Salary pension (£)	Mean combined pension (£)
Females	327	76%	50	£34,260	£25,399	£4,154	£3,214	£5,628
Males	101	24%	48	£40,226	£33,753	£6,203	£5,310	£8,832
			Gender Gap	15%	25%	33%	39%	36%

Pensioner members

The GPG for pensioner members of the Fund is 54%. Further detail is set out in the table below.

Gender pension gap for pensioner members	Number of members	Percentage of overall membership	Mean age	Mean pension (£)
Females	13,742	72%	72	£4,188
Males	5,333	28%	73	£9,067
			Gender Gap	54%

A chart of mean total pension for males and females by age is shown below.



Appendix 5 Climate risk analysis

Climate risk is an important consideration for the 2025 valuation. We have carried out scenario analysis on the assets and liabilities of the Fund in-line with the Key Principles drafted by the four actuarial firms who advise the LGPS funds and agreed with the Government Actuary's Department (GAD) for the purpose of the 2025 LGPS valuations in England and Wales. Further information can be found on the climate scenario analysis report dated 21 October 2025.

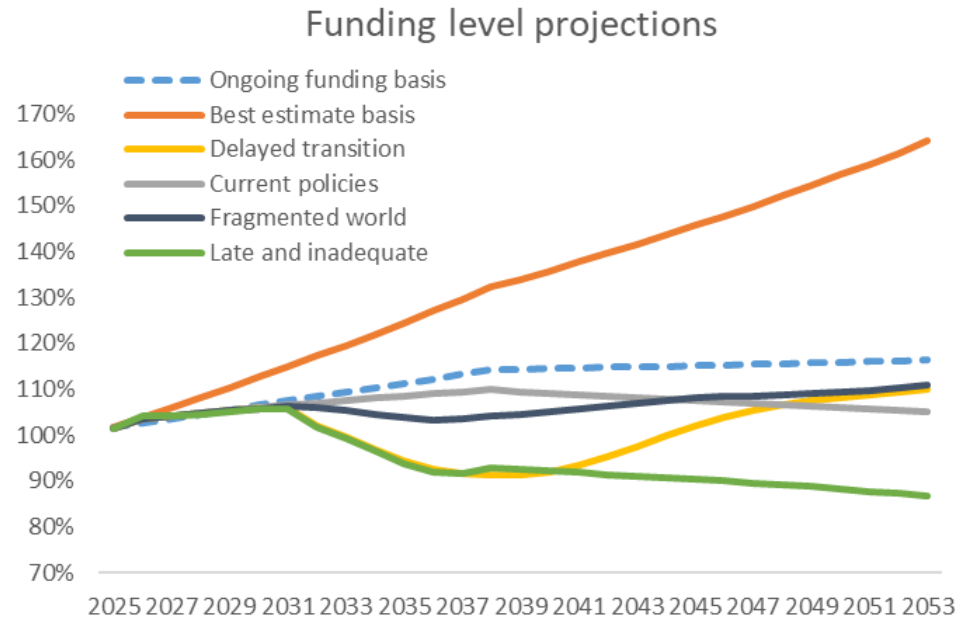
We have also considered the requirements under the Occupational Pension Schemes (Climate Change Governance and Reporting) Regulations 2021 although these regulations do not apply to the LGPS. This is because we anticipate that the equivalent regulations that could ultimately apply to the LGPS will contain similar requirements.

The analysis considered the projected funding level under various climate-related scenarios, alongside the agreed 2025 valuation basis for the Fund. The results thereby allow the administering authority to consider whether the 2025 valuation funding strategy is sufficiently robust in the context of this climate scenario analysis and any potential contribution impacts.

The climate scenarios within Barnett Waddingham's in-house climate scenario framework include three climate scenarios which have been provided by Moody's Analytics and are broadly based on scenarios from the Network for Greening the Financial System (NGFS). A brief description of these scenarios is set out below:

- 1 Base case** – we have assumed the Fund's best estimate funding basis as the base case scenario. All other scenarios are considered relative to this base case, using the relative difference in returns and financial assumptions between Moody's own base case, and each climate scenario.
- 2 Delayed transition** – additional policy implementation is delayed until 2030. Stronger policies are required (versus a scenario whereby policy implementation is not delayed), such as a higher effective carbon price, in order to limit global temperature rises to below 2.0°C.
- 3 Current policies** – no new climate policies are introduced beyond the current policies in place, resulting in a lower effective carbon price, but also a growing concentration of greenhouse gas emissions and a larger increase in global temperatures, relative to a transition scenario.
- 4 Fragmented world** – additional policy implementation is delayed and diverges globally. Those countries with net-zero targets are assumed to meet c.80% of their target, whilst those without follow current policies.
- 5 Late and inadequate action** – this scenario has been created by Barnett Waddingham, and takes the highest negative return impact, on an annual basis, across the other three scenarios. The scenario is assumed to exhibit a mixture of characteristics from the above scenarios (i.e. delayed transition and high temperature rises).

The impact on the funding position of each scenario is considered in the graph below.



Limitations of the analysis

Our quantitative analysis does not consider the impact of many risks associated with climate change due to the current lack of robust data. Examples include certain investment risks and a degree of inflation risk (we believe these are quantified within the model to some extent, but not fully), litigation risk, political risk and geopolitical risk. Furthermore, it is widely believed that climate scenarios fail to exhaustively model transition and physical risks and the impact of tipping points is not included in the data.

Climate scenario modelling is in its infancy and is expected to undergo significant development over time and data quality is generally considered spurious. We intend to develop and build upon this analysis over time as data quality and availability improves. Our analysis recognises these limitations and has addressed them by combining the quantitative and qualitative analyses in the comprehensive report dated 21 October 2025.

Appendix 6 Decisions Log

The triennial actuarial valuation is a significant exercise carried out by the Fund. This report is a summary of the main outputs from the triennial actuarial valuation. The outputs are the result of funding strategy analysis, discussions and Fund decisions throughout the valuation process. A high-level audit trail of the key funding strategy decisions is set out below.

Funding strategy

The actuarial assumptions were reviewed by the Fund at the initial results meeting on 2 September 2025, supported by analytics and other information from the Fund Actuary. The assumptions, including the level of prudence, were agreed by the Fund at the Pensions Committee meeting on 16 September 2025.

The funding strategy parameters, including management of surpluses (where present) and prudence levels, which feed into the setting of employer contribution rates, were reviewed by the Fund and agreed in September 2025.

Other aspects of the funding strategy, including the approach to cessation valuations, exit credits, bulk transfers and new employers, were also reviewed in September 2025.

The outcomes of these decisions were collated and documented in an updated copy of the Funding Strategy Statement (FSS). The draft FSS was discussed at the Pension Fund Committee meeting on 16 September 2025.

The Fund proposed amendments to the FSS following the employer consultation process and these were approved by the Pension Fund Committee on 27 January 2026. The final version of the FSS was agreed at the 10 March 2026 Pension Fund Committee meeting.

Stakeholder engagement

In addition, the Fund has engaged with employers and the Local Pensions Board throughout the valuation exercise. A summary of the engagement is detailed below.

- Funding Strategy Statement consultation: an updated version of the FSS was issued to employers on 3 November 2025 with the opportunity to feed back comments or ask questions to the Fund by 12 December 2025. Feedback from the consultation and any amendments to the FSS was set out in a note and was circulated to employers after the 27 January 2026 Pension Fund Committee meeting.
- Employer results: a results schedule setting out their 2025 valuation funding position and contribution rate was issued to relevant employers in November 2025. An updated results schedule was then issued to relevant employers after the FSS employer consultation process and the 27 January 2026 Pension Fund Committee meeting where the proposed amendments to the approach to setting contribution rates was agreed.
- Employer forum: the employers forum on 27 November 2025 discussed the key themes of the 2025 valuation and gave employers the opportunity to discuss their results with the Fund and Fund Actuary.

Appendix 7 Dashboard

GAD Dashboard

		2025 valuation	2022 valuation
Funding position - local funding basis			
Funding level (assets/liabilities)	%	101.6%	91.5%
Funding level (change since previous valuation)	%	10.1%	11.1%
Asset value used at the valuation	£m	3,722	2,947
Value of liabilities (including McCloud liability)	£m	3,664	3,220
Surplus (deficit)	£m	58	(273)
Discount rate – past service	% pa	5.0%	4.6%
Discount rate – future service	% pa	5.0%	4.6%
Assumed pension increases (CPI)	% pa	2.7%	2.9%
		In line with the Funding Strategy Statement, with the level of prudence in the ongoing discount rate determined based on a success probability of approximately 70%	In line with the Funding Strategy Statement, with the level of prudence in the ongoing discount rate determined based on a success probability of approximately 65%
Method of derivation of discount rate, plus any changes since previous valuation	Freeform text		
Assumed Life expectancies at age 65			
Life expectancy for current pensioners – men age 65	years	21.00	21.33
Life expectancy for current pensioners – women age 65	years	23.70	24.09
Life expectancy for future pensioners – men age 45	years	22.60	22.30
Life expectancy for future pensioners – women age 45	years	25.40	25.74
Past service funding position - LGPS EW SAB basis (for comparison purposes only)			
Market value of assets	£m	3,654	2,997
Value of liabilities	£m	3,576	3,094
Funding level on SAB basis (assets/liabilities)	%	102.2%	96.9%
Funding level on SAB basis (change since last valuation)	%	5.3%	7.6%
Contribution rates payable			

		2025 valuation	2022 valuation
Primary contribution rate	% of pay	16.9%	19.6%
Secondary contribution rate (cash amounts in each year)			
Secondary contribution rate - 1st year of rates and adjustment certificate	£m	20.11	26.95
Secondary contribution rate - 2nd year of rates and adjustment certificate	£m	20.03	26.15
Secondary contribution rate - 3rd year of rates and adjustment certificate	£m	19.91	26.81
Giving total expected contributions			
Total expected contributions - 1st year of rates and adjustment certificate (£ figure based on assumed payroll)	£m	130.37	118.11
Total expected contributions - 2nd year of rates and adjustment certificate (£ figure based on assumed payroll)	£m	134.01	120.82
Total expected contributions - 3rd year of rates and adjustment certificate (£ figure based on assumed payroll)	£m	137.74	125.14
Assumed payroll (cash amounts in each year)			
Total assumed payroll - 1st year of rates and adjustment certificate (£m)	£m	592.82	465.46
Total assumed payroll - 2nd year of rates and adjustment certificate (£m)	£m	614.61	483.42
Total assumed payroll - 3rd year of rates and adjustment certificate (£m)	£m	637.19	502.07
3-year average total employer contribution rate	% of pay	21.8%	25.1%
Average employee contribution rate (% of pay)	% of pay	6.4%	6.5%
Employee contribution rate (£ figure based on assumed payroll of £m)	£m pa	37.83	30.17
Deficit recovery & surplus management plan for local authorities			
Latest deficit recovery period end date, where this methodology is used by the fund's actuarial advisor	Year	2037	2037
Earliest surplus spreading period end date, where this methodology is used by the fund's actuarial advisor	Year	2037	2037
The time horizon end date, where this methodology is used by the fund's actuarial advisor	Year	n/a	n/a
The funding plan's likelihood of success, where this methodology is used by the fund's actuarial advisor	%	n/a	n/a
Surplus Methodology (Explicit contribution stabilisation mechanism; surplus spreading period; surplus buffer and surplus spreading period; Volatility asset reserve and surplus spreading period; other; or N/A)	Drop down	Surplus buffer and surplus spreading period	n/a

		2025 valuation	2022 valuation
Surplus methodology & parameters explanation (including changes since previous valuation)	Freeform text	If over 110% funded, surplus may be repaid over a period of 11 years (some employers are subject to a maximum contribution reduction as per FSS)	n/a
Additional information			
Percentage of liabilities relating to employers with deficit recovery periods of longer than 20 years	%	n/a	n/a
Percentage of total liabilities that are in respect of Tier 3 employers	%	9%	11%
Included climate change analysis/comments	Yes/No	Yes	Yes
Gender pension gap statistic - Fund active mean CARE pension GPG	%	32.4%	n/a
Gender pension gap statistic - Fund active mean combined Final Salary and CARE pension GPG	%	35.7%	n/a
Gender pension gap statistic - Fund pensioner mean pension GPG	%	53.8%	n/a

Appendix 8 Rates and Adjustments Certificate

Regulatory background

In accordance with Regulation 62 of the Local Government Pension Scheme Regulations we have made an assessment of the contributions that should be paid into the Fund by participating employers for the period 1 April 2026 to 31 March 2029.

The method and assumptions used to calculate the contributions set out in the Rates and Adjustments Certificate are detailed in the Funding Strategy Statement and in Appendix 2 of this report.

The primary rate of contribution as defined by Regulation 62(5) for each employer for the period 1 April 2026 to 31 March 2029 is set out in the table overleaf. The primary rate is the employer's contribution towards the cost of benefits accruing in each of the three years beginning 1 April 2026. In addition each employer pays a secondary contribution as required under Regulation 62(7) that when combined with the primary rate results in the minimum total contributions as set out below. This secondary rate is based on their particular circumstances and so individual adjustments are made for each employer.

Primary and secondary rate summary

The weighted average (by payroll) of the individual employers' primary rates is 16.9% p.a. of payroll.

The secondary rates across the entire Fund (as a percentage of projected Pensionable Pay and as a monetary amount) in each of the three years in the period 1 April 2026 to 31 March 2029 is set out in the table below.

Secondary contributions	2026/27	2027/28	2028/29
Total as a % of payroll	3.4%	3.3%	3.1%
Equivalent to total monetary amounts of	£20,112,000	£20,027,000	£19,907,000

These amounts reflect the individual employers' recovery plans.

General and specific notes

Employers may pay further amounts at any time and future periodic contributions, or the timing of contributions, may be adjusted on a basis approved by us as the Fund Actuary. The administering authority, with the advice from us as the Fund Actuary may allow some or all of these contributions to be treated as a prepayment and offset against future certified contributions.

The certified contributions include an allowance for expenses and the expected cost of lump sum death benefits but exclude early retirement strain and augmentation costs which are payable by participating employers in addition.

The monetary amounts are payable in 12 monthly instalments throughout the relevant year unless agreed by the administering authority and an individual employer.

The notes below relate to particular employers and correspond to the letters shown in the specific notes column in the table below.

- i. The employer has agreed to prepay their secondary contributions at the start of each year (i.e. in April 2026, April 2027 and April 2028). The cash amounts due are shown in brackets. If they do not make the lump sum payments by 30 April in the period they are due, the contributions in the table will apply as normal.
- ii. The employer has agreed to prepay their secondary contributions for the three year intervaluation period in full in April 2026. The cash amount due is shown in brackets. If they do not make the lump sum payment by 30 April 2026, the contributions in the table will apply as normal.

Employer code	Employer name	Primary rate (% pay)	Secondary rate (% pay plus monetary adjustment)			Total contributions i.e. primary (% of pay) plus secondary			Specific notes
			2026/27	2027/28	2028/29	2026/27	2027/28	2028/29	
Government bodies									
205	Luton Borough Council	17.0%	2.2%	2.2%	2.2%	19.2%	19.2%	19.2%	
319	Central Bedfordshire	16.4%	6.5%	6.5%	6.5%	22.9%	22.9%	22.9%	
320	Bedford Borough Council	16.9%	£5.27m	£5.47m	£5.67m	16.9% plus £5.27m (£5.15m)	16.9% plus £5.47m (£5.34m)	16.9% plus £5.67m (£5.53m)	i
261	Beds and Luton Combined Fire Authority	17.3%	£74,550	£77,300	£80,150	17.3% plus £74,550 (£215,545)	17.3% plus £77,300 (nil)	17.3% plus £80,150 (nil)	ii
518	Chief Constable	15.4%	-	-	-	15.4%	15.4%	15.4%	

Employer code	Employer name	Primary rate	Secondary rate (% pay plus monetary adjustment)			Total contributions i.e. primary (% of pay) plus secondary			Specific notes
			(% pay)	2026/27	2027/28	2028/29	2026/27	2027/28	
Further education bodies									
208	Cranfield University	19.5%	£964k	£499k	-	19.5% plus £964k	19.5% plus £499k	19.5%	
233	University of Bedfordshire	19.3%	-	-	-	19.3%	19.3%	19.3%	
241	Luton Sixth Form College	17.7%	0.8%	0.8%	0.8%	18.5%	18.5%	18.5%	
699	Bedford College	17.7%	-2.3%	-2.3%	-2.3%	15.4%	15.4%	15.4%	
Academies									
<i>Funding Pool</i>	<i>Academies</i>								
321	All Saints Academy	16.7%	0.9%	0.9%	0.9%	17.6%	17.6%	17.6%	
324	HEART Academies - Bedford	16.7%	0.9%	0.9%	0.9%	17.6%	17.6%	17.6%	
329	Sharnbrook Academy Federation	16.7%	3.6%	2.7%	1.8%	20.3%	19.4%	18.5%	
332	Eversholt Lower School	16.7%	0.9%	0.9%	0.9%	17.6%	17.6%	17.6%	
335	BEST - Samuel Whitbread Community College	16.7%	0.9%	0.9%	0.9%	17.6%	17.6%	17.6%	
336	Vandyke Upper School	16.7%	0.9%	0.9%	0.9%	17.6%	17.6%	17.6%	
339	Greenfield & Pulloxhill Academy	16.7%	0.9%	0.9%	0.9%	17.6%	17.6%	17.6%	
341	BEST - Robert Bloomfield Academy	16.7%	0.9%	0.9%	0.9%	17.6%	17.6%	17.6%	
343	Eaton Bray Academy	16.7%	0.9%	0.9%	0.9%	17.6%	17.6%	17.6%	
345	Redborne Upper School	16.7%	0.9%	0.9%	0.9%	17.6%	17.6%	17.6%	

Employer code	Employer name	Primary rate	Secondary rate (% pay plus monetary adjustment)			Total contributions i.e. primary (% of pay) plus secondary			Specific notes
			(% pay)	2026/27	2027/28	2028/29	2026/27	2027/28	
346	Woodland Academy	16.7%	0.9%	0.9%	0.9%	17.6%	17.6%	17.6%	
350	Goldington Academy	16.7%	3.4%	2.6%	1.8%	20.1%	19.3%	18.5%	
352	Alameda Middle School	16.7%	0.9%	0.9%	0.9%	17.6%	17.6%	17.6%	
354	Wootton Academy Trust	16.7%	0.9%	0.9%	0.9%	17.6%	17.6%	17.6%	
357	Icknield High School	16.7%	0.9%	0.9%	0.9%	17.6%	17.6%	17.6%	
358	The Firs Lower School	16.7%	0.9%	0.9%	0.9%	17.6%	17.6%	17.6%	
359	Hadrian Academy	16.7%	0.9%	0.9%	0.9%	17.6%	17.6%	17.6%	
360	BEST - Etonbury Middle School	16.7%	0.9%	0.9%	0.9%	17.6%	17.6%	17.6%	
361	Cranfield Church of England Academy	16.7%	0.9%	0.9%	0.9%	17.6%	17.6%	17.6%	
362	Stratton Education Trust	16.7%	3.5%	2.6%	1.7%	20.2%	19.3%	18.4%	
364	Weatherfield Special School	16.7%	0.9%	0.9%	0.9%	17.6%	17.6%	17.6%	
368	BEST - St Christopher's Lower School	16.7%	0.9%	0.9%	0.9%	17.6%	17.6%	17.6%	
369	St Mary's Stotfold	16.7%	0.9%	0.9%	0.9%	17.6%	17.6%	17.6%	
370	Gilbert Inglefield Academy	16.7%	0.9%	0.9%	0.9%	17.6%	17.6%	17.6%	
469	St Augustine's Academy	16.7%	0.9%	0.9%	0.9%	17.6%	17.6%	17.6%	
471	Queensbury Academy	16.7%	0.9%	0.9%	0.9%	17.6%	17.6%	17.6%	
474	Advantage MAT - Bedford Free School	16.7%	0.9%	0.9%	0.9%	17.6%	17.6%	17.6%	

Employer code	Employer name	Primary rate	Secondary rate (% pay plus monetary adjustment)			Total contributions i.e. primary (% of pay) plus secondary			Specific notes
			(% pay)	2026/27	2027/28	2028/29	2026/27	2027/28	
477	Holywell Academy	16.7%	0.9%	0.9%	0.9%	17.6%	17.6%	17.6%	
482	Mark Rutherford School Trust	16.7%	0.9%	0.9%	0.9%	17.6%	17.6%	17.6%	
483	Whipperley Infants Academy	16.7%	0.9%	0.9%	0.9%	17.6%	17.6%	17.6%	
488	Toddington St George's C of E School	16.7%	0.9%	0.9%	0.9%	17.6%	17.6%	17.6%	
491	Sharnbrook Primary	16.7%	0.9%	0.9%	0.9%	17.6%	17.6%	17.6%	
492	Putnoe Academy	16.7%	0.9%	0.9%	0.9%	17.6%	17.6%	17.6%	
493	Our Lady Immaculate Catholic Academies Trust	16.7%	0.9%	0.9%	0.9%	17.6%	17.6%	17.6%	
494	The Hills Academy	16.7%	0.9%	0.9%	0.9%	17.6%	17.6%	17.6%	
495	Raynsford C of E Academy	16.7%	0.9%	0.9%	0.9%	17.6%	17.6%	17.6%	
506	Academy of Central Bedfordshire	16.7%	0.9%	0.9%	0.9%	17.6%	17.6%	17.6%	
508	Chiltern Learning - Denbigh High School, Challney Boys and Dallow Primary School	16.7%	0.9%	0.9%	0.9%	17.6%	17.6%	17.6%	
509	Active Education Academy Trust	16.7%	0.9%	0.9%	0.9%	17.6%	17.6%	17.6%	
510	BEST - Gravenhurst Lower School	16.7%	0.9%	0.9%	0.9%	17.6%	17.6%	17.6%	
511	Clifton All Saints Academy	16.7%	0.9%	0.9%	0.9%	17.6%	17.6%	17.6%	
512	Oak Bank School	16.7%	0.9%	0.9%	0.9%	17.6%	17.6%	17.6%	
513	LIFE Academies Trust	16.7%	0.9%	0.9%	0.9%	17.6%	17.6%	17.6%	
514	BEST - Gothic Mede School	16.7%	0.9%	0.9%	0.9%	17.6%	17.6%	17.6%	

Employer code	Employer name	Primary rate	Secondary rate (% pay plus monetary adjustment)			Total contributions i.e. primary (% of pay) plus secondary			Specific notes
			(% pay)	2026/27	2027/28	2028/29	2026/27	2027/28	
519	BEST - Langford Village Academy	16.7%	0.9%	0.9%	0.9%	17.6%	17.6%	17.6%	
528	St Thomas Catholic Academies Trust - Cardinal Newman	16.7%	4.5%	3.3%	2.1%	21.2%	20.0%	18.8%	
529	St Thomas Catholic Academies Trust - St Margaret of Scotland	16.7%	4.5%	3.3%	2.1%	21.2%	20.0%	18.8%	
530	St Thomas Catholic Academies Trust - St Martin de Porres	16.7%	4.5%	3.3%	2.1%	21.2%	20.0%	18.8%	
541	B.I.L.T.T - St Johns	16.7%	0.9%	0.9%	0.9%	17.6%	17.6%	17.6%	
542	B.I.L.T.T - Greys	16.7%	0.9%	0.9%	0.9%	17.6%	17.6%	17.6%	
543	B.I.L.T.T - Grange	16.7%	0.9%	0.9%	0.9%	17.6%	17.6%	17.6%	
544	Chiltern Learning - Marston	16.7%	0.9%	0.9%	0.9%	17.6%	17.6%	17.6%	
546	Advantage MAT - Elstow	16.7%	8.8%	6.2%	3.6%	25.5%	22.9%	20.3%	
547	Chiltern Learning - Putteridge	16.7%	0.9%	0.9%	0.9%	17.6%	17.6%	17.6%	
548	Chiltern Learning - Challney Girls	16.7%	0.9%	0.9%	0.9%	17.6%	17.6%	17.6%	
551	D.S.A.M.A.T Thomas Whitehead	16.7%	5.5%	4.0%	2.5%	22.2%	20.7%	19.2%	
553	HEART Academies - Shortstown	16.7%	0.9%	0.9%	0.9%	17.6%	17.6%	17.6%	
554	HEART Academies - Shackleton	16.7%	0.9%	0.9%	0.9%	17.6%	17.6%	17.6%	
555	HEART Academies - Cauldwell	16.7%	0.9%	0.9%	0.9%	17.6%	17.6%	17.6%	
556	D.S.A.M.A.T Manshead	16.7%	5.5%	4.0%	2.5%	22.2%	20.7%	19.2%	
563	D.S.A.M.A.T Caldecote	16.7%	5.5%	4.0%	2.5%	22.2%	20.7%	19.2%	

Employer code	Employer name	Primary rate	Secondary rate (% pay plus monetary adjustment)			Total contributions i.e. primary (% of pay) plus secondary			Specific notes
			(% pay)	2026/27	2027/28	2028/29	2026/27	2027/28	
565	D.S.A.M.A.T Kensworth	16.7%	5.5%	4.0%	2.5%	22.2%	20.7%	19.2%	
574	St Thomas Catholic Academies Trust - St Vincents	16.7%	4.5%	3.3%	2.1%	21.2%	20.0%	18.8%	
575	St Thomas Catholic Academies Trust - St Marys	16.7%	4.5%	3.3%	2.1%	21.2%	20.0%	18.8%	
576	D.S.A.M.A.T Totternhoe	16.7%	5.5%	4.0%	2.5%	22.2%	20.7%	19.2%	
578	Chiltern Learning - Linslade	16.7%	0.9%	0.9%	0.9%	17.6%	17.6%	17.6%	
579	Chiltern Learning - Cedars	16.7%	0.9%	0.9%	0.9%	17.6%	17.6%	17.6%	
580	Chiltern Learning - Lark Rise	16.7%	0.9%	0.9%	0.9%	17.6%	17.6%	17.6%	
583	Everton Heath Primary School	16.7%	4.8%	3.5%	2.2%	21.5%	20.2%	18.9%	
584	Chiltern Learning - Chiltern Academy	16.7%	0.9%	0.9%	0.9%	17.6%	17.6%	17.6%	
586	D.S.A.M.A.T Roxton	16.7%	5.5%	4.0%	2.5%	22.2%	20.7%	19.2%	
588	BEST - Lawnside Academy	16.7%	0.9%	0.9%	0.9%	17.6%	17.6%	17.6%	
589	Pioneer Learning Trust - Southfield	16.7%	0.9%	0.9%	0.9%	17.6%	17.6%	17.6%	
590	Pioneer Learning Trust - Whitefield	16.7%	6.4%	4.6%	2.8%	23.1%	21.3%	19.5%	
591	Pioneer Learning Trust - Chantry	16.7%	0.9%	0.9%	0.9%	17.6%	17.6%	17.6%	
596	Scholar's Education Trust - Priory	16.7%	3.9%	2.9%	1.9%	20.6%	19.6%	18.6%	
603	BEST - Pix Brook Academy	16.7%	0.9%	0.9%	0.9%	17.6%	17.6%	17.6%	
608	Chiltern Learning Trust - Ardley Hill Academy	16.7%	0.9%	0.9%	0.9%	17.6%	17.6%	17.6%	

Employer code	Employer name	Primary rate	Secondary rate (% pay plus monetary adjustment)			Total contributions i.e. primary (% of pay) plus secondary			Specific notes
			(% pay)	2026/27	2027/28	2028/29	2026/27	2027/28	
610	Tennyson Road Primary	16.7%	0.9%	0.9%	0.9%	17.6%	17.6%	17.6%	
623	Pyramid School Trust - Westoning	16.7%	8.7%	6.1%	3.5%	25.4%	22.8%	20.2%	
624	Pyramid School Trust - Parkfields	16.7%	9.5%	6.6%	3.7%	26.2%	23.3%	20.4%	
625	Pyramid School Trust - Ramsey Manor	16.7%	9.9%	6.9%	3.9%	26.6%	23.6%	20.6%	
644	D.S.A.M.A.T Studham	16.7%	5.5%	4.0%	2.5%	22.2%	20.7%	19.2%	
645	Pyramid School Trust - Arnold Academy	16.7%	0.9%	0.9%	0.9%	17.6%	17.6%	17.6%	
646	Pyramid School Trust - Harlington Upper School	16.7%	0.9%	0.9%	0.9%	17.6%	17.6%	17.6%	
647	BEST - Campton Academy	16.7%	0.9%	0.9%	0.9%	17.6%	17.6%	17.6%	
651	Farley Junior Academy	16.7%	5.9%	4.2%	2.5%	22.6%	20.9%	19.2%	
653	D.S.A.M.A.T Ravensden	16.7%	5.5%	4.0%	2.5%	22.2%	20.7%	19.2%	
654	Tennyson - Lime Tree Primary	16.7%	11.3%	7.8%	4.3%	28.0%	24.5%	21.0%	
668	D.S.A.M.A.T Northill	16.7%	5.5%	4.0%	2.5%	22.2%	20.7%	19.2%	
671	Middlesex Learning Trust - Stopsley High	16.7%	6.4%	4.6%	2.8%	23.1%	21.3%	19.5%	
673	Poppy Hill MAT-Henlow	16.7%	0.9%	0.9%	0.9%	17.6%	17.6%	17.6%	
674	Poppy Hill MAT-Meppershall	16.7%	7.5%	5.3%	3.1%	24.2%	22.0%	19.8%	
676	Advantage MAT - Queens Park	16.7%	0.9%	0.9%	0.9%	17.6%	17.6%	17.6%	
677	D.S.A.M.A.T Ursula Taylor Academy	16.7%	5.5%	4.0%	2.5%	22.2%	20.7%	19.2%	

Employer code	Employer name	Primary rate	Secondary rate (% pay plus monetary adjustment)			Total contributions i.e. primary (% of pay) plus secondary			Specific notes
			(% pay)	2026/27	2027/28	2028/29	2026/27	2027/28	
680	Chiltern Learning - Daubeney	16.7%	0.9%	0.9%	0.9%	17.6%	17.6%	17.6%	
681	Chiltern Learning - Kempston	16.7%	0.9%	0.9%	0.9%	17.6%	17.6%	17.6%	
682	Chiltern Learning - Lancot	16.7%	0.9%	0.9%	0.9%	17.6%	17.6%	17.6%	
683	Chiltern Learning - Springfield	16.7%	0.9%	0.9%	0.9%	17.6%	17.6%	17.6%	
686	D.S.A.M.A.T St James	16.7%	5.5%	4.0%	2.5%	22.2%	20.7%	19.2%	
690	Houstone School	16.7%	0.9%	0.9%	0.9%	17.6%	17.6%	17.6%	
691	KST - Doverly Academy	16.7%	0.9%	0.9%	0.9%	17.6%	17.6%	17.6%	
697	D.S.A.M.A.T (Wenlock CofE Primary School)	16.7%	5.5%	4.0%	2.5%	22.2%	20.7%	19.2%	
708	Chiltern Learning Trust - Lea Manor High School Performing Arts College	16.7%	0.9%	0.9%	0.9%	17.6%	17.6%	17.6%	
714	Bedford Road Primary Academy	16.7%	0.9%	0.9%	0.9%	17.6%	17.6%	17.6%	
715	Kingsbridge Hockliffe	16.7%	0.9%	0.9%	0.9%	17.6%	17.6%	17.6%	
716	Pyramid Schools Trust - Harlington & Sundon	16.7%	3.9%	2.9%	1.9%	20.6%	19.6%	18.6%	
717	KST - Wixams Academy	16.7%	0.9%	0.9%	0.9%	17.6%	17.6%	17.6%	
718	KST - Wixams Tree Primary	16.7%	0.9%	0.9%	0.9%	17.6%	17.6%	17.6%	
720	Advantage MAT - Laburnum Primary School	16.7%	0.9%	0.9%	0.9%	17.6%	17.6%	17.6%	
722	BILLT Rivertree Free School	16.7%	0.9%	0.9%	0.9%	17.6%	17.6%	17.6%	
723	Advantage MAT - SLT	16.7%	0.9%	0.9%	0.9%	17.6%	17.6%	17.6%	

Employer code	Employer name	Primary rate	Secondary rate (% pay plus monetary adjustment)			Total contributions i.e. primary (% of pay) plus secondary			Specific notes
			(% pay)	2026/27	2027/28	2028/29	2026/27	2027/28	
724	Advantage MAT - Rushmere	16.7%	0.9%	0.9%	0.9%	17.6%	17.6%	17.6%	
726	Kingsbridge Educational Trust - Willow Grove	16.7%	0.9%	0.9%	0.9%	17.6%	17.6%	17.6%	
729	Pioneer Learning Trust - Ferrars Junior	16.7%	0.9%	0.9%	0.9%	17.6%	17.6%	17.6%	
735	Castle Newnham School	16.7%	0.9%	0.9%	0.9%	17.6%	17.6%	17.6%	
736	Kingsbridge - Fulbrook	16.7%	0.9%	0.9%	0.9%	17.6%	17.6%	17.6%	
737	Chiltern Learning - Wootton Lower	16.7%	0.9%	0.9%	0.9%	17.6%	17.6%	17.6%	
738	D.S.A.M.A.T - Great Barford	16.7%	5.7%	4.1%	2.5%	22.4%	20.8%	19.2%	
739	S.T.C.A.T - Sacred Heart	16.7%	0.9%	0.9%	0.9%	17.6%	17.6%	17.6%	
741	Scholars Education - Dunstable Ickneild	16.7%	0.9%	0.9%	0.9%	17.6%	17.6%	17.6%	
747	Pyramid Sch-Brooklands	16.7%	0.9%	0.9%	0.9%	17.6%	17.6%	17.6%	
755	Lime Academy Hartwell	16.7%	0.9%	0.9%	0.9%	17.6%	17.6%	17.6%	
763	Pioneer Learning Trust - Ferrars Academy	16.7%	0.9%	0.9%	0.9%	17.6%	17.6%	17.6%	
764	Heart Academy Trust - Goldington Green Academy	16.7%	0.9%	0.9%	0.9%	17.6%	17.6%	17.6%	
Small scheduled bodies									
<i>Funding Pool</i>	<i>Small scheduled bodies</i>								
211	Beds and River Ivel Drainage Board	17.8%	£40,950	£42,500	£44,050	17.8% plus £40,950	17.8% plus £42,500	17.8% plus £44,050	
212	Biggleswade Town Council	17.8%	£31,050	£32,200	£33,400	17.8% plus £31,050	17.8% plus £32,200	17.8% plus £33,400	

Employer code	Employer name	Primary rate	Secondary rate (% pay plus monetary adjustment)			Total contributions i.e. primary (% of pay) plus secondary			Specific notes
			(% pay)	2026/27	2027/28	2028/29	2026/27	2027/28	
213	Aley Green Cemetery Joint Committee	17.8%	£170	£180	£180	17.8% plus £170	17.8% plus £180	17.8% plus £180	
214	Kempston Burials Joint Committee	17.8%	£3,680	£3,820	£3,960	17.8% plus £3,680	17.8% plus £3,820	17.8% plus £3,960	
217	Toddington Parish Council	17.8%	£4,510	£4,680	£4,850	17.8% plus £4,510	17.8% plus £4,680	17.8% plus £4,850	
218	Leighton Linlade Town Council	17.8%	£47,600	£49,350	£51,200	17.8% plus £47,600	17.8% plus £49,350	17.8% plus £51,200	
219	Potton Town Council	17.8%	£6,390	£6,620	£6,870	17.8% plus £6,390 (£18,470)	17.8% plus £6,620 (nil)	17.8% plus £6,870 (nil)	ii
220	Sandy Town Council	17.8%	£10,550	£10,900	£11,350	17.8% plus £10,550	17.8% plus £10,900	17.8% plus £11,350	
221	Amphill Town Council	17.8%	£9,780	£10,140	£10,520	17.8% plus £9,780	17.8% plus £10,140	17.8% plus £10,520	
226	Stotfold Town Council	17.8%	£4,100	£4,260	£4,410	17.8% plus £4,100	17.8% plus £4,260	17.8% plus £4,410	
230	Dunstable Town Council	17.8%	£66,700	£69,200	£71,750	17.8% plus £66,700	17.8% plus £69,200	17.8% plus £71,750	
231	Flitwick Town Council	17.8%	£16,950	£17,550	£18,200	17.8% plus £16,950	17.8% plus £17,550	17.8% plus £18,200	
237	Houghton Regis Town Council	17.8%	£29,300	£30,400	£31,550	17.8% plus £29,300	17.8% plus £30,400	17.8% plus £31,550	
268	Kempston Town Council	17.8%	£4,490	£4,660	£4,830	17.8% plus £4,490	17.8% plus £4,660	17.8% plus £4,830	
293	Caddington Parish Council	17.8%	£1,490	£1,540	£1,600	17.8% plus £1,490	17.8% plus £1,540	17.8% plus £1,600	
294	Bromham Parish Council	17.8%	£1,940	£2,010	£2,080	17.8% plus £1,940	17.8% plus £2,010	17.8% plus £2,080	
295	Harlington Parish Council	17.8%	£2,110	£2,180	£2,260	17.8% plus £2,110	17.8% plus £2,180	17.8% plus £2,260	
296	Arlesey Town Council	17.8%	£4,710	£4,880	£5,060	17.8% plus £4,710	17.8% plus £4,880	17.8% plus £5,060	
302	Wootton Parish Council	17.8%	£2,270	£2,360	£2,440	17.8% plus £2,270	17.8% plus £2,360	17.8% plus £2,440	

Employer code	Employer name	Primary rate	Secondary rate (% pay plus monetary adjustment)			Total contributions i.e. primary (% of pay) plus secondary			Specific notes
			(% pay)	2026/27	2027/28	2028/29	2026/27	2027/28	
316	Marston Moreteyne Parish Council	17.8%	£2,980	£3,090	£3,210	17.8% plus £2,980	17.8% plus £3,090	17.8% plus £3,210	
353	Biddenham Parish Council	17.8%	£1,180	£1,220	£1,270	17.8% plus £1,180	17.8% plus £1,220	17.8% plus £1,270	
356	Brickhill Parish Council	17.8%	£680	£700	£730	17.8% plus £680	17.8% plus £700	17.8% plus £730	
383	Northill Parish Council	17.8%	£910	£950	£980	17.8% plus £910	17.8% plus £950	17.8% plus £980	
390	Blunham Parish Council	17.8%	£600	£620	£640	17.8% plus £600	17.8% plus £620	17.8% plus £640	
391	Houghton Conquest Parish Council	17.8%	£550	£570	£590	17.8% plus £550	17.8% plus £570	17.8% plus £590	
392	Bolnhurst & Keysoe Parish Council	17.8%	£390	£400	£410	17.8% plus £390	17.8% plus £400	17.8% plus £410	
476	Staploe Parish Council	17.8%	£230	£240	£240	17.8% plus £230	17.8% plus £240	17.8% plus £240	
489	Stanbridge Parish Council	17.8%	£420	£430	£450	17.8% plus £420	17.8% plus £430	17.8% plus £450	
501	Sharnbrook Parish Council	17.8%	£840	£870	£900	17.8% plus £840	17.8% plus £870	17.8% plus £900	
522	Kensworth Parish Council	17.8%	£1,150	£1,190	£1,230	17.8% plus £1,150	17.8% plus £1,190	17.8% plus £1,230	
527	Oakley Parish Council	17.8%	£960	£990	£1,030	17.8% plus £960	17.8% plus £990	17.8% plus £1,030	
531	Great Barford Parish Council	17.8%	£1,550	£1,610	£1,660	17.8% plus £1,550	17.8% plus £1,610	17.8% plus £1,660	
534	Maulden Parish Council	17.8%	£860	£890	£920	17.8% plus £860	17.8% plus £890	17.8% plus £920	
594	Shefford Town Council	17.8%	£3,580	£3,720	£3,850	17.8% plus £3,580	17.8% plus £3,720	17.8% plus £3,850	
600	Shortstown Parish Council	17.8%	£960	£990	£1,030	17.8% plus £960	17.8% plus £990	17.8% plus £1,030	
622	Aspley Guise Parish Council	17.8%	£810	£840	£870	17.8% plus £810	17.8% plus £840	17.8% plus £870	

Employer code	Employer name	Primary rate	Secondary rate (% pay plus monetary adjustment)			Total contributions i.e. primary (% of pay) plus secondary			Specific notes
			(% pay)	2026/27	2027/28	2028/29	2026/27	2027/28	
631	Campton & Chicksands Parish Council	17.8%	£420	£440	£460	17.8% plus £420	17.8% plus £440	17.8% plus £460	
635	Streatley Parish Council	17.8%	£330	£340	£350	17.8% plus £330	17.8% plus £340	17.8% plus £350	
Other									
300	Active Luton	16.2%	-	-	-	16.2%	16.2%	16.2%	
313	The Culture Trust Luton	16.2%	-16.2%	-16.2%	-16.2%	-	-	-	
326	Mitie	30.1%	-30.1%	-30.1%	-30.1%	-	-	-	
520	East London NHS Foundation Trust (Luton)	16.9%	-16.9%	-16.9%	-16.9%	-	-	-	
521	East London NHS Foundation Trust (Bedford)	19.6%	-15.2%	-15.2%	-15.2%	4.4%	4.4%	4.4%	
537	Pathfinder Legal Services Ltd	13.5%	-5.0%	-5.0%	-5.0%	8.5%	8.5%	8.5%	
582	Aramark Ltd	25.7%	-7.2%	-7.2%	-7.2%	18.5%	18.5%	18.5%	
585	Kindred (M&D)	20.9%	-0.5%	-0.5%	-0.5%	20.4%	20.4%	20.4%	
592	Compass (Shared Learning Trust)	23.7%	-2.1%	-2.1%	-2.1%	21.6%	21.6%	21.6%	
595	Churchill (Ltn Cult Propert)	35.8%	£230	£240	£250	35.8% plus £230	35.8% plus £240	35.8% plus £250	
605	Kindred (Cedars, Linslade & Lark Rise)	20.7%	-0.2%	-0.2%	-0.2%	20.5%	20.5%	20.5%	
612	FCC Environment Services Ltd	23.8%	-	-	-	23.8%	23.8%	23.8%	
614	School Catering Support Ltd (Relish)	17.1%	-1.7%	-1.7%	-1.7%	15.4%	15.4%	15.4%	
615	Active Luton (Libraries Contract)	19.7%	-	-	-	19.7%	19.7%	19.7%	

Employer code	Employer name	Primary rate	Secondary rate (% pay plus monetary adjustment)			Total contributions i.e. primary (% of pay) plus secondary			Specific notes
			(% pay)	2026/27	2027/28	2028/29	2026/27	2027/28	
626	ABM Catering Ltd (Bushmead)	24.2%	-17.7%	-17.7%	-17.7%	6.5%	6.5%	6.5%	
628	ABM Catering Ltd (Surrey Street)	22.1%	-0.9%	-0.9%	-0.9%	21.2%	21.2%	21.2%	
637	Aspens Services (Hillborough)	23.4%	-1.6%	-1.6%	-1.6%	21.8%	21.8%	21.8%	
640	Aspens Services (Foxdell)	19.5%	-	-	-	19.5%	19.5%	19.5%	
656	Aspens Services (DSAMAT)	19.6%	-4.2%	-4.2%	-4.2%	15.4%	15.4%	15.4%	
660	ABM Catering (William Austin Infant School)	30.1%	-10.9%	-10.9%	-10.9%	19.2%	19.2%	19.2%	
661	ABM Catering (Luton Primary Cluster)	21.1%	-0.8%	-0.8%	-0.8%	20.3%	20.3%	20.3%	
662	Alliance in Partnership Ltd (Southcott)	20.7%	-	-	-	20.7%	20.7%	20.7%	
663	Alliance in Partnership Ltd (Marston Church End)	28.1%	-0.8%	-0.8%	-0.8%	27.3%	27.3%	27.3%	
665	Alliance in Partnership Ltd (St Joseph's)	21.5%	-8.1%	-8.1%	-8.1%	13.4%	13.4%	13.4%	
669	Kindred (Shared Learning Trust - Chalk Hill)	27.5%	-	-	-	27.5%	27.5%	27.5%	
670	Compass (STCAT)	21.9%	-6.8%	-6.8%	-6.8%	15.1%	15.1%	15.1%	
678	turn IT on	18.7%	-4.0%	-4.0%	-4.0%	14.7%	14.7%	14.7%	
687	Easy Clean (OLICAT)	23.6%	-4.3%	-4.3%	-4.3%	19.3%	19.3%	19.3%	
688	Partnership Education Ltd	19.6%	£6,170	£6,390	£6,630	19.6% plus £6,170	19.6% plus £6,390	19.6% plus £6,630	
692	Aspens (Warden Hill Inf)	22.2%	-	-	-	22.2%	22.2%	22.2%	
698	Aspens Services Ltd (Wenlock)	20.6%	-	-	-	20.6%	20.6%	20.6%	

Employer code	Employer name	Primary rate	Secondary rate (% pay plus monetary adjustment)			Total contributions i.e. primary (% of pay) plus secondary			Specific notes
			(% pay)	2026/27	2027/28	2028/29	2026/27	2027/28	
700	ABM Catering (Stopsley Primary)	27.4%	-	-	-	27.4%	27.4%	27.4%	
704	M Group Highways Limited (CBC)	27.3%	-10.3%	-10.3%	-10.3%	17.0%	17.0%	17.0%	
705	Sports & Leisure Management (CBC)	23.4%	-	-	-	23.4%	23.4%	23.4%	
707	Partnership Education (Pyramid Schools Trust)	12.4%	-4.4%	-4.4%	-4.4%	8.0%	8.0%	8.0%	
710	Aspens (Someries Junior)	29.7%	-	-	-	29.7%	29.7%	29.7%	
711	Aspens Services Ltd (CLT)	21.4%	-3.4%	-3.4%	-3.4%	18.0%	18.0%	18.0%	
712	Dolce Ltd (Printon Hill)	26.6%	-	-	-	26.6%	26.6%	26.6%	
719	Greenwich Leisure Limited (GLL)	21.1%	-3.2%	-3.2%	-3.2%	17.9%	17.9%	17.9%	
721	Cater Link Limited (Wilden Primary School)	23.5%	-	-	-	23.5%	23.5%	23.5%	
725	Alliance in Partnership Ltd (Derwent-Southill)	14.6%	-1.2%	-1.2%	-1.2%	13.4%	13.4%	13.4%	
727	ABM Catering Limited (Sacred Heart)	21.7%	-	-	-	21.7%	21.7%	21.7%	
728	ABM Catering Limited (Denbigh Primary)	14.6%	-	-	-	14.6%	14.6%	14.6%	
730	Partnership Education Ltd (Icknield High School)	13.6%	-4.3%	-4.3%	-4.3%	9.3%	9.3%	9.3%	
731	Cater Link Limited (Meridian Trust)	22.6%	-	-	-	22.6%	22.6%	22.6%	
732	Aspens Services Limited (Doverly Academy)	15.1%	-2.8%	-2.8%	-2.8%	12.3%	12.3%	12.3%	
733	Coombs Catering (OLICAT)	21.0%	-2.3%	-2.3%	-2.3%	18.7%	18.7%	18.7%	
734	Aspens Services Limited (Arnold Academy)	25.5%	-2.1%	-2.1%	-2.1%	23.4%	23.4%	23.4%	

Employer code	Employer name	Primary rate	Secondary rate (% pay plus monetary adjustment)			Total contributions i.e. primary (% of pay) plus secondary			Specific notes
			(% pay)	2026/27	2027/28	2028/29	2026/27	2027/28	
742	Amplius Living	24.2%	£64,800	£67,150	£69,650	24.2% plus £64,800	24.2% plus £67,150	24.2% plus £69,650	
743	abm Catering (Tennyson)	16.8%	-0.3%	-0.3%	-0.3%	16.5%	16.5%	16.5%	
744	Kindred – Stopsley High	28.0%	-	-	-	28.0%	28.0%	28.0%	
748	School Catering Support - Ramridge	28.9%	-	-	-	28.9%	28.9%	28.9%	
750	School Catering Support Ltd (The Meads)	24.7%	-	-	-	24.7%	24.7%	24.7%	
751	School Catering Support (Icknield Primary)	21.0%	-	-	-	21.0%	21.0%	21.0%	
757	School Catering Support - St Matthews	20.5%	0.0%	0.0%	0.0%	20.5%	20.5%	20.5%	

Post valuation employers

A number of employers joined the Fund on or after 1 April 2025 and their rates were certified at their date of joining. The table below summarises contributions required from these employers from their start date where known. Any employer that joined the Fund after 31 March 2025 and is not listed below will be advised of their contribution rates separately.

Employer code	Employer name	Primary rate	Secondary rate (% pay plus monetary adjustment)			Total contributions i.e. primary (% of pay) plus secondary		
		(% pay)	2026/27	2027/28	2028/29	2026/27	2027/28	2028/29
740	Chiltern Learning - Aspley Guise	16.7%	0.9%	0.9%	0.9%	17.6%	17.6%	17.6%
756	Pioneer Learning Trust - Lakeview	16.7%	0.9%	0.9%	0.9%	17.6%	17.6%	17.6%
758	Scholars Education - Watling	16.7%	0.9%	0.9%	0.9%	17.6%	17.6%	17.6%
759	Pioneer Learning Trust - Warden Hill	16.7%	0.9%	0.9%	0.9%	17.6%	17.6%	17.6%
762	D.S.A.M.A.T St Leonards	16.7%	0.9%	0.9%	0.9%	17.6%	17.6%	17.6%
765	Innovate (Impact Foods) (STCAT)	24.2%	0.0%	0.0%	0.0%	24.2%	24.2%	24.2%
767	Rapid Commercial Cleaning Services Ltd (The Firs Lower School)	7.0%	0.0%	0.0%	0.0%	7.0%	7.0%	7.0%
TBC	St Thomas Catholic Academies Trust - St Joseph	16.7%	0.9%	0.9%	0.9%	17.6%	17.6%	17.6%
TBC	Heart Academies - Wilstead	16.7%	0.9%	0.9%	0.9%	17.6%	17.6%	17.6%



www.barnett-waddingham.co.uk

Barnett Waddingham LLP is authorised and regulated by the Financial Conduct Authority. Registered No. OC307678. Registered Office: 2 London Wall Place, London, EC2Y 5AU. Barnett Waddingham LLP is wholly owned by Howden UK&I Jersey Limited.

However, this report is not intended to provide and must not be construed as regulated investment advice. Returns are not guaranteed, and the value of investments may go down as well as up, so you may get back less than you invest.

The information in this report is based on our understanding of current taxation law, proposed legislation and HM Revenue & Customs practice, which may be subject to future variation.